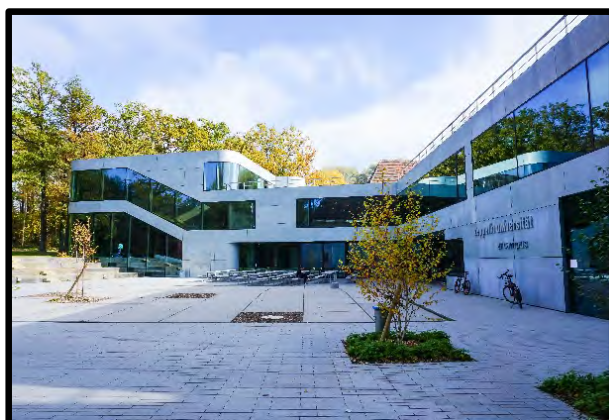


## Zeppelin University | Institutional Fact Sheet | AY 2022/23

<b>Zeppelin University   Name and Address</b>	Am Seemooser Horn 20   88045 Friedrichshafen, Germany
<b>Responsible Office   Incoming Students</b>	International Office
<b>Contact Persons   International Office</b>	<p><b>Angela Kurtz</b>  <b>Head of Student Life Cycle &amp; International Affairs</b>            Phone: 0049 7541 6009 2040            E-Mail: <a href="mailto:angela.kurtz@zu.de">angela.kurtz@zu.de</a></p> <p><b>Nina Möller</b>  <b>International Program Coordinator   Incoming</b>            Phone: 0049 7541 6009 2041            E-Mail: <a href="mailto:nina.moeller@zu.de">nina.moeller@zu.de</a></p> <p><b>Barbara Reinhardt</b>  <b>Erasmus Program Coordinator</b>            Phone: 0049 7541 6009 2042            E-Mail: <a href="mailto:barbara.reinhardt@zu.de">barbara.reinhardt@zu.de</a></p> <p><b>Gisela Maslo-Gerlach</b>  <b>International Program Coordinator   Outgoing</b>            Phone: 0049 7541 6009 2012            E-Mail: <a href="mailto:gisela.maslo-gerlach@zu.de">gisela.maslo-gerlach@zu.de</a></p>



<b>Campus Fallenbrunnen 3</b>	<b>Campus Seemooser Horn</b>
Main university campus	Campus located directly at the Lake of Constance
Address: Fallenbrunnen 3, 88045 Friedrichshafen	Address: Am Seemooser Horn, 88045 Friedrichshafen

### About Zeppelin University

Zeppelin University offers students the unique chance to develop their skills in such a way that they are able to reach out their own goals and to find solutions to the challenges of our complex times. All structures and processes of Zeppelin University are interdisciplinary, in an inspiring community with a lot of room for personal development and a great pioneering spirit. Zeppelin University is located in Friedrichshafen, Germany. The place is the heart of Europe between Germany, Austria and Switzerland. It is a gateway hub into all countries of the European Union.



## Nomination and Application Deadlines

	Nomination deadline	Application deadline
Fall Term	June 1	June 15
Spring Term	November 1	November 15

## Admission Requirements

General	Nominated students will receive an application form by email
Language requirements	Students from non-English speaking countries who wish to study in English must provide either a TOEFL iBT 90, an IELTS Academic Test score 6.5 or a B2 level certificate of English (CEFR) from their sending institution. Students who would like to study in German must provide a B2 level certificate of German (CEFR) from their sending institution.

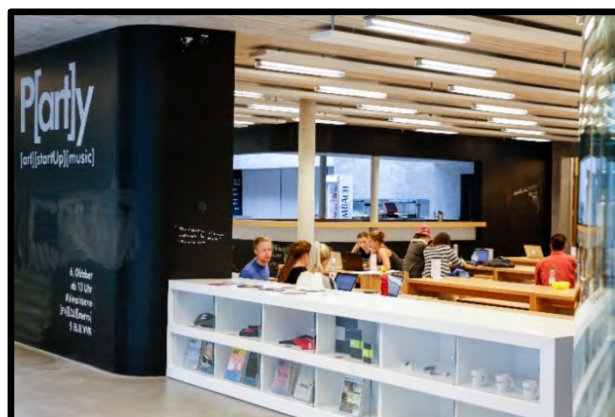
## Academic Calendar 2022/2023

	Fall Term 2022	Spring Term 2023
Arrival Date	end of August 2022	January 25th, 2023
Orientation Week	September 3rd – September 9th, 2022	January 28th – February 3rd, 2023
Start of Classes	September 12th, 2022	February 6th, 2023
Break(s)	no breaks	April 7th - 11th, 2023 (Easter break)
Exam Dates	December 7th – 22nd, 2022	May 15th – 31st, 2023
First possible Departure Date	December 23rd, 2022 (official end of semester: December 31 <sup>st</sup> , 2022)	June 1st, 2023 (official end of semester: August 31 <sup>st</sup> , 2023)

## Academics

Departments/faculties	1. Corporate Management and Economics 2. Communication and Cultural Management 3. Public Administration and International Relations 4. Sociology, Politics and Economics
Exchange Program Information	<a href="https://www.zeppelin-university.com/studying-lifelong-learning/incomings/study.php">https://www.zeppelin-university.com/studying-lifelong-learning/incomings/study.php</a>
University academic strengths	interdisciplinary, small groups, excellent supervision
Language specifications (e.g. courses in English or web link to those units in English)	<a href="http://www.zu.de/courses">www.zu.de/courses</a>  ZU courses taught in English in former semesters: Spring 2022 Fall 2021
Are Incoming Students able to enroll in both undergraduate and postgraduate courses?	Generally, yes. However, there may be higher English language requirements and other prerequisites for master's courses.
Minimum course requirements for a full-time load	No requirements for exchange students.

	We recommend exchange students to take 4 courses per semester (24 ECTS).
Language classes	Free German language courses for foreign students. German language placement test at the beginning of the semester in order to find the right course level; English, French, Spanish language courses available.
Website link to find classes online	<a href="http://www.zu.de/courses">www.zu.de/courses</a>



### Estimated Costs – Exchange & Direct Enroll

Tuition and Direct Enroll Fees, Application Fee, Administrative Fee, Intensive Language Fee	none (for incoming students from partner universities) (different rules apply for freemover exchange students)
Meal Plan On Campus	lunch available in the cafeteria on campus ~ €4 per meal
Mandatory Health Insurance Only German compulsory health insurances accepted! Exception: Students who present an European Health Insurance Card (EHIC) do not need an additional German legal health insurance.	~ €105 per month
Textbooks	~ €50 per semester
Personal Spending Money	~ €250 per month
Public transportation ticket (“Studiticket”)	~ €130 per semester
<b>Visa-related expenses</b>	
Visa extension (in case the student does not come with a visa valid for the entire time)	€100 Students with scholarships are exempted from paying the fee.
Blocked account (required by German government to proof financial stability; blocked account is not necessary if another proof of financial stability (e.g. scholarship, legal obligation letter) can be shown)	Different providers: Deutsche Bank, x-patrio, Fintiba Sum on blocked account per month: €861

### New! Visiting Student Research Program

About the program	Zeppelin University is well known for its outstanding student research and invites international students to do a research semester. The program includes travel and conference grants, academic (co-)supervision, a German language course, cultural activities as well as advisory service for accommodation, visa, health insurance, etc.
Who can apply?	Undergraduate and graduate students
Duration	1 semester

Application	Application must be submitted via email to <a href="mailto:aynur.erdogan@zu.de">aynur.erdogan@zu.de</a> . Deadline Fall: 01 June Deadline Spring: 01 November
Costs & Funding	Visiting research students do not pay tuition fee at Zeppelin University and receive a scholarship for their travel costs. They are expected to pay their living costs.
Further information	<a href="https://www.zeppelin-university.com/visiting">https://www.zeppelin-university.com/visiting</a> <a href="https://issuu.com/zeppelin-university/docs/student-research">https://issuu.com/zeppelin-university/docs/student-research</a>

## Housing

Student Housing	<a href="http://www.seezeit.com">www.seezeit.com</a> for on-campus housing (exchange students will receive information on dorms upon successful application to Zeppelin University)
On-Campus Housing	~ €350 - €400 per month
Off-Campus Housing	~ €350 - €400 per month

## Miscellaneous

Websites for additional information on the town/university	<a href="http://www.zu.de">www.zu.de</a> <a href="http://en.friedrichshafen.info/">http://en.friedrichshafen.info/</a> <a href="http://www.bodensee.de/">http://www.bodensee.de/</a>
Student population overall	1.400 total
international	~ 140 exchange students per year
Distance from the nearest major city	90 minutes by train to Munich, Stuttgart, and to Zurich, Switzerland
Airport pick up and Buddy Program	Zeppelin University student buddies will pick up the international students from the local train station or airport.
Extracurricular Clubs	<u><a href="#">International student group</a></u> <u><a href="#">Other student initiatives</a></u>

**We look forward to hosting your students!**

